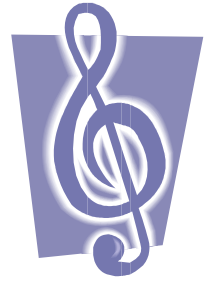


Bass Pitch



NAME: _____

On each staff draw a bass clef and then draw semibreve notes to match the letters that spell out the word under each staff. Use a different pitch position for repeated letters.

B E D

B A G

F E D

F A D E

D A D

F A D

B A B E

A G E

D A G

C A F E

E D G E

C A B

On the staves below draw 3 other words that use A, B, C, D, E, F and G
